

# Corporate Brochure

---



OTA CHUZOSHO CO., LTD.

Ota Casting Group

*OTA CHUZOSHO CO., LTD. has been producing a large number of  
high quality castings by sophisticated technical skills.  
And now ... we are challenging the creation of new products and values.*



Hiroshima Plant

# Corporate Profile



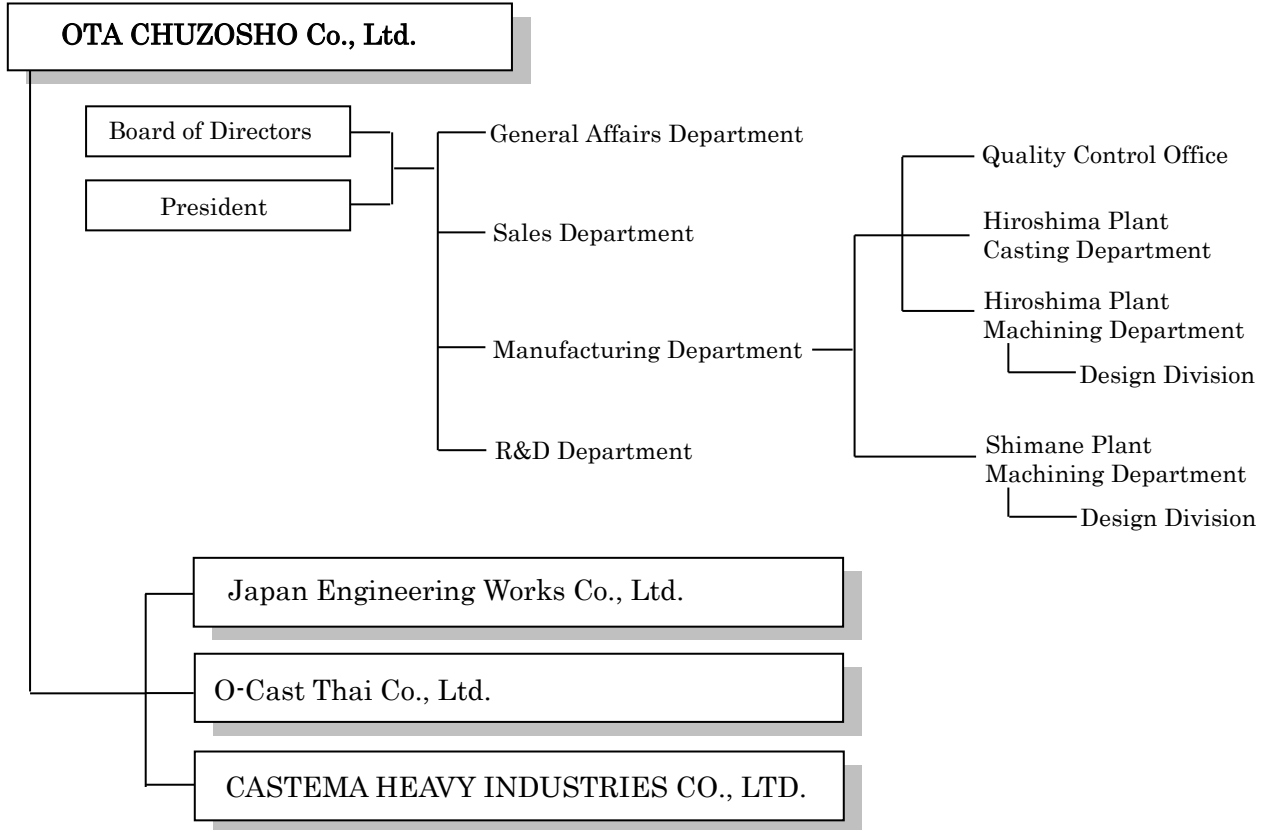
Pouring molten metal into the mold

Corporate Name	OTA CHUZOSHO CO., LTD.	
Initiation	February, 1923	
Date of Establishment	March, 1948	
Capital	10 million yen	
Representative	Yoshio Ota, Representative Executive	
Employees	90	
Annual Business	2.2 billion yen	
Description of Business	Integrated system for production including Design, Pattern making, Casting, Heat treatment, Machining, Painting, Sheet-metal processing, Plate working, and Assembly	
Location	<p>《 Head Office 》            3-23, Kamitenma-cho Nishi-ku Hiroshima, 733-0021 Japan            TEL +81-82-232-8271(main switchboard) FAX +81-82-293-0070            E-mail info@ohtachuzousyo.co.jp            URL www.ohtachuzousyo.co.jp</p> <p>《 Hiroshima Plant 》            157-1, Moutsuna Kitahiroshima-cho Yamagata-gun Hiroshima, 731-1505 Japan            TEL +81-826-72-5151(main switchboard) FAX +81-826-72-5155            E-mail info@ohtachuzousyo.co.jp</p> <p>《 Shimane Plant 》            395-2, Kamikamedani, Ohnan-cho, Ohchi-gun, Shimane 696-0024 Japan            TEL/FAX +81-855-83-1018            E-mail: ohnan@ohtachuzousyo.co.jp</p>	
Investing Companies	O-Cast Thai Co., Ltd. Japan Engineering Works Co., Ltd. CASTEMA HEAVY INDUSTRIES CO., LTD.	
Major Customers	Mitsubishi Heavy Industries, Ltd. JFE Steel Corporation Nippon Steel & Sumitomo Metal Corporation Kobe Steel, Ltd.	
Major Banks of Account	Hiroshima Bank Japan Finance Corporation The Shokochukin Bank SAN-IN GODO BANK	Honkawa Branch Hiroshima Branch Hiroshima Branch Hiroshima Nishi Branch
Major Suppliers	Tsuchiyoshi Co., Ltd. DAISEN SANGYO Corporation MARUMOTO Steel Materials Co., Ltd	Kusano Co., Ltd. Nishimura Graphite Co., Ltd.
Affiliated Organizations	HIROSHIMAKEN CAST IRON FOUNDRY ASSOCIATION Japan Foundry Society, Inc.	
Certified Foundry	Meehanite Worldwide Corporation (MWC) JAPAN WATER WORKS ASSOCIATION NIPPON KAIJI KYOKAI (ClassNK) DNV GL American Bureau of Shipping (ABS)	

# Organization



## 【Ota Casting Group】



### *Japan Engineering Works Co., Ltd (100% Investing Company)*

- Japan Engineering Works Co., Ltd. is a business, production and supply base of both home and abroad for industrial machine parts, taking advantage of the regional characteristics of the eastern part of Hiroshima. It mainly sells parts for coke ovens for iron foundries. Its cooperation with global companies can fully satisfy customers’ requests for quality, delivery time and cost.

### *O-Cast Thai Co., Ltd.(100% Investing Company)*

- To meet customers’ global procurement needs, O-Cast Thai Co., Ltd. was established as a production base in Thailand, Southeast Asia. O-Cast Thai Co., Ltd. supplies casting parts and sheet metal parts, and conducts machining of industrial machine parts with high precision under the support of skilled processing technology of OTA CHUZOSHO Co., Ltd.. It also provides value-adding processes from heat treatments to paint finish before delivering products directly to customers.

### *CASTEMA HEAVY INDUSTRIES Co., Ltd (100% Investing Company)*

- Following O-Cast Thai Co., Ltd., we established casting factory in Thailand in February 2016. It is possible to constant supply the high quality products to Japan and our investing company “O-Cast” under the support of skilled casting technology of OTA CHUZOSHO Co.,Ltd.

# History



## 【Ota Casting Group】

- 1923 Feb. Kiichi Ota started business
- 1948 Mar. For business expansion, the conventional private operation was changed to "OTA CHUZOSHO", Private Limited company
- 1964 Jul. Technical cooperation with Hitachi Zosen Corporation in T-process started
- 1965 Jun. Technical cooperation with Yuka Badicshe Co., Ltd. in Full Mold Casting started
- 1967 Jun. Newly established Machine Tool Department
- 1969 Oct. Technical cooperation in the area of Fluid Sand Process developed in Soviet Russia started
- 1970 Apr. According to the government structural improvement project, the ON Group (5 companies took part in) was formed. As one of the core companies, it formulated five-year equipment modernization project
- 1970 Dec. Increased the capital to 10million yen, and the company name was changed to OTA CHUZOSHO Co., Ltd.
- 1973 Feb. Yoshiaki Ota acceded to president
- 1975 Jan. Obtained the plant site in Chiyoda-cho, Yamagata-gun, Hiroshima Prefecture and completed its improvement
- 1980 Jul. Newly established a foundry in Chiyoda-cho
- 1986 Feb. Newly established a machine tool factory in Chiyoda-cho
- 1989 Sep. Additionally established a foundry
- 1990 Sep. Newly established Engineering Department
- 1990 Dec. Additionally established a foundry
- 1994 Aug. Newly established a wooden mold workshop
- 1995 Jan. Yoshio Ota acceded to president
- 1995 Apr. Established an electric furnace
- 1997 Mar. Additionally established a machining factory
- 2002 Oct. Additionally established a foundry
- 2002 Oct. Brought in trainees from Indonesia
- 2002 Dec. Expanded the commercial land in Chiyoda-cho, Yamagata-gun
- 2003 Feb. The 80<sup>th</sup> anniversary of business
- 2004 Feb. Spun off Engineering Department and established Japan Engineering Works, Private Limited Company  
Newly established Kita-kyushu branch
- 2004 Apr. Established O-Cast Thai Co., Ltd. Newly established a machining factory in Thailand
- 2005 Dec. Newly established an office and a building for welfare
- 2006 Sep. Japan Engineering Works, Private Limited Company was changed to Japan Engineering Works Co., Ltd.
- 2008 Jun. Newly established a steel metal factory, (Japan Engineering Works)
- 2008 Jul. Newly established a melting workshop and installed two 5 Ton electric melting furnaces.
- 2010 Feb. Closed Kita-kyushu branch and newly established branch in Fukuyama, (Japan Engineering Works)
- 2012 Apr. Moved O-cast Thai Co., Ltd and newly established steel metal factory in Thailand
- 2016 Feb. Established CASTEMA HEAVY INDUSTRIES CO., LTD. Newly established a casting factory in Thailand
- 2017 Apr. Newly established Shimane Plant in Ohnan-cho, Ohchi-gun, Shimane Prefecture

# Hiroshima Plant



Site	52,800 m <sup>2</sup>
Casting Section	5,882 m <sup>2</sup>
Wooden Storage	5,083 m <sup>2</sup>
Machine Tool Section	1,680 m <sup>2</sup>
Office and Recreation Facilities	700 m <sup>2</sup>
Outdoor Crane Yard	2,850 m <sup>2</sup>

Casting Capacity	FC, FCD, FCH, Ni-Resist
	Max. 15t
	Min. 10kg

Casting Process	Self-hardening furan resin casting molds
	Gas hardened water glass CO <sub>2</sub> casting molds

Main Products	Printing Machine	Frame, Bed
	Ship	Engine, Shaft Baring
	Machine Tool	Column, Bed
	Injection Molding Machine	Platen, Bed
	Coke Oven	Furnace Cover, Frame and Rim
	Transport Equipment	Press Die
	Generator	Case, Bed
	Compression Machine Parts	Case, Bed, Tube



Pouring molten metal out of the furnace

# Hiroshima Plant



## ■ Casting Department Equipment

Mixer	(TAIYO MACHINERY)	20 t /H	3 units
Mixer	(TAIYO MACHINERY)	10 t /H	1 unit
5 t high frequency furnace	(INDUCT)	2500kw/H	2 units
Furan sand collecting	(CASTINGMACHINE KIYOTA)	20 t /H	1 unit
Hanger Shotblasting machine	(SINTO KOGIO)	3,500×3,500×7,000mm	2 units
25 t chassis-type annealing furnace	(KRC)	6,000×3,000×2,500mm	1 unit
Painting booth	(ARIMA)	3,500×10,000mm	1 unit
Burring robot	(YAMAZAKI KOGYO/Industry)	3,500×12,000mm	1 unit
Emission of light analyzer	(SPECTRO A.I)	SPECTROMAXx	1 unit
Materials analyzer	(DOLPHIN)	—	1 unit
Hydraulic universal tester	(TOKYO SHIKENKI)	AY-300SIV	1 unit
Simulation soft	(IBARAKI HITACHI JYUOHOU SERVICE)	ADSTEFAN	1 unit
Digital ultrasonic test instrument	(RYOUDEN SYOUNAN ELECTRONICS)	UI-25	1 unit
Magnetic particle flaw detectors	(EISHIN KAGAKU)	HANDY MAGMA	2 units
Hand grinder	(NEW ALLOY)	—	1 unit
Metal graphic microscope	(YAESU KOUGAKU)	BMI	1 unit
Shore durometer	(TOKYO SHIKENKI, etc.)	SH-D	3 units
Rebound durometer	(GE)	Dyna MIC DL	1 unit
Globular judgement soft	(INOTEC)	QCD-VPU200	1 unit
Wooden form manufacturing			1 unit
Can manufacturing equipment			1 unit
Crasher Machine, Shearing machine	(TOYO PRESS INDUSTRY, etc.)	700 t etc.	5 units
Propane gas bulk facilities	(CHUGOKU KOGYO)	3,000kg	1 unit
Truck scale	(Mitsubishi Steel Mfg.)	40 t	1 unit
Shovel lift	(Komatsu, TOYOTA)	7 t etc.	6 units
Over-head crane	(Mitsubishi Electric)	20 t	4 units
Over-head crane	(Mitsubishi Electric)	15 t	2 units
Other cranes			24 units
Metal frame (the greatest dimension)		4,000×4,000×1,600mm	2 units
		2,000×8,500×1,000mm	5 units



Hanger Shot blast



25 t chassis-type annealing

## ■Machining Department Equipment

Five-faced processing machine	(SHIN NIPPON KOKI TMS35VM)	3,500×20,000mm	1 unit
Five-faced processing machine	(O-KUMA MCR-A5C II)	3,000×8,000mm	1 unit
Five-faced processing machine	(O-KUMA MCR-A5C II)	2,000×5,000mm	1 unit
Five-faced processing machine	(O-KUMA MCR-A5C)	2,500×4,000mm	1 unit
Five-faced processing machine	(O-KUMA MCR-A5C)	2,000×5,000mm	1 unit
Five-faced processing machine	(KOTOBUKI INDUSTRIES KMC10)	1,400×3,600mm	1 unit
Shape processing machine	(SHIN NIPPON KOKI RB-2N)	1,600×2,850mm	1 unit
NC turning center	(O-M MACHINERY Ltd. VTLex 2500)	2,500φ(3,000φ)	1 unit
NC turning center	(O-M MACHINERY Ltd. Neo80)	1,600φ(2,000φ)	1 unit
NC turning center	(O-M MACHINERY Ltd. Neoα-16EX)	1,600φ(2,000φ)	1 unit
Turning lathe	(O-M MACHINERY Ltd. TMD25/35)	2,500φ(3,300φ)	1 unit
Turning lathe	(O-M MACHINERY Ltd. TX13)	1,300φ(1,600φ)	1 unit
Turning lathe	(O-M MACHINERY Ltd. TX16)	1,600φ(2,000φ)	1 unit
NC boring machine	(TOSHIBA BTD-200QH)	1,200×1,500mm	1 unit
Machining center	(ENSHU VMC650)	650×1,300mm	1 unit
Machining center	(ENSHU VF CENTER)	400×560mm	1 unit
Machining center	(OKK VM53R)	600×1,000mm	1 unit
Machining center	(OKK VM43R)	400×800mm	1 unit
Lathe	(Dainichi D1-1M, TAKISAWA TE60-12 etc.)		4 units
Radial boring machine	(O-KUMA)	2,000mm	1 unit
Radial boring machine	(OGAWA IRON WORKS etc.)	1,700mm	2 units
Layout machine	(Tokyo Boeki)	3,500×8,000mm	1 unit
Painting Booth	(OTA CHUZOSHO CO., LTD.)	3,000×8,000mm	1 unit
Ceiling crane	(Mitsubishi Electric)	10 t	1 unit
Ceiling crane	(Mitsubishi Electric)	5 t , etc.	2 units
Ceiling crane	(Mitsubishi Electric)	2.8 t	2 units

## ■Design Division Equipment

- CAD/CAM (SPACE-E Hitachi Zosen Corporation)
- CAD (Pro CAD)
- 3DCAD TOPSolid (Kodama Corporation, Ltd.) 2units
- SolidWorks 1unit
- CADMister (UEL Corporation) 1unit
- 2DCAD CADMAC (CADMAC CO., LTD.) 1unit
- 3D Printer (MUTOH INDUSTRIES LTD.) 1unit
- 3D Handy Scanner (CREAFORM) 1unit



Turning lathe



Five-faced processing machine



# Shimane Plant



Site	66,000 m <sup>2</sup>
Plant area	5,000 m <sup>2</sup>
Wooden Storage	5,083 m <sup>2</sup>

Description of Business	Design (CAD·CAM), Machining
Main Products	Press Mold for Automobile

## ■Machining Department Equipment

Five-faced processing machine	(O-KUMA MCR-A5C II)	2,500×4,000mm	1 unit
Five-faced processing machine	(O-KUMA MCR-A5C II)	2,000×4,000mm	1 unit
Machining center	(OKK VM53R)	600×1,000mm	1 unit
Machining center	(OKK VM43R)	400×800mm	1 unit
Ceiling crane	(Mitsubishi Electric)	5t	2 units

## ■Design Division Equipment

CAD/CAM		2units
3DCAD TOPSolid	(Kodama Corporation, Ltd.)	2units
3DCAD CADMister	(UEL Corporation)	1unit
3DCAM TOPCAM2M	(Kodama Corporation, Ltd.)	1unit
3DCAM TOPCAM3M+T	(Kodama Corporation, Ltd.)	1unit
3DCAM CAMStructure	(UEL Corporation)	1unit



Five-faced processing machine  
O-KUMA MCR-A5C II  
2,500×4,000mm



Five-faced processing machine  
O-KUMA MCR-A5C II  
2,000×4,000mm



## Japan Engineering Works Co., Ltd.

J. E. W.

### Business, Production, Supply Base

Attaching importance to the regional characteristics as a member of OTA CASTING GROUP, Japan Engineering Works Co., Ltd. carries on business at home and abroad, produces and supplies industrial machine parts. High-precision large-size cast metal and large-size machining parts produced in the consistent production system for design, first-rate manufacturing systems (casting, plate working, machining) and overall assembly - which are one of the characteristics of OTA CHUZOSHO Co., Ltd. - include not only furnace covers, furnace frame or peripheral devices for coke ovens, but also a great deal of products for use in iron foundries, chemical plants and so on, are shipped out to both domestic and overseas plants, and thus Japan Engineering Works Co., Ltd. has successfully extended the reach of its business operations.

As for maintenance activities, Japan Engineering Works Co., Ltd. positively makes improvement, and recommends high-quality and high value-added products to meet the needs of customers. It strives to become a company that cares about people and the environment, pouring efforts into a cooperative system of global environment conservation, raising awareness of problems for ever and a day, and renewing efforts to serve the industrial society.

Date of Establishment February 23, 2004  
 Capital 3 million yen  
 Representative Yoshio Ota, Representative Executive  
 Number of employees 20  
 Location 《 Head Office 》

3-23, Kamitenma-cho, Nishi-ku, Hiroshima, 733-0021 Japan  
 TEL +81-82-232-8271 FAX +81-82-293-0070  
 E-mail honsha@jeworks.co.jp

《 Fukuyama Branch 》

4-9-3, Hikino-cho Fukuyama-shi Hiroshima, 721-0942 Japan  
 TEL+81-84-945-7882 FAX +81-84-945-7883  
 E-mail fukuyama@jeworks.co.jp

《 Chiyoda Plant 》

157-1, Moutsuna Kita-Hiroshima-cho Yamagata-gun Hiroshima, 731-1505 Japan  
 TEL+81-826-72-5153 FAX +81-826-72-5163  
 E-mail chiyoda@jeworks.co.jp

Description of Business Manufacture, Supply and Sale of Casting parts and Sheet metal parts for Steel Works  
 Design, Manufacture, Supply and Assembly of Industrial machine parts

Main Products  
 Coke oven equipment parts ( Furnace cover, Furnace frame, Protection plate )  
 Coke oven incidental equipment parts ( Seal plate, Small cover component, Mouse, Charging door, Frame, Flue metal parts )  
 Converter parts ( Furnace hole parts, Heat and abrasion resistant liner )



Full View of Coke Oven



## O-Cast Thai Co., Ltd.

### Overseas Production Base

By introducing the world-class production engineering and quality control engineering of Japan to Thailand, it is possible to enhance international competitiveness. Moreover, in addition to the integrated system for production including design, manufacture (casting, plate working, machining) and overall assembly conducted in Japan, this newly established overseas production base enables customers both at home and abroad to make a broad choice of quality, delivery date and cost.

Date of Establishment	April 11, 2004
Capital	93.2 million THB
Representative	Yoshio Ota, Chairman of the Board of Directors
Number of Employees	30
Head Office/Plant	150/72 Pinthong 2 Industrial Estate Moo.9, Nongkham, Sriracha, Chonburi 20230 Thailand TEL +66-(0)38-347-096~7 FAX +66(0)38-347-098 E-mail o_cast_thai@yahoo.co.jp
Description of Business	Machining, Sheet metal processing, Supply and Procurement of Casting and Assembly
Available Services	Ship machinery parts ( Beds, Shaft bearings, Oil collars, Special bolts ) Printing machinery parts ( Frames, Beds, Shaft bearings, Cases, Covers, Pins ) Injection molding machines parts ( Beds, Platen, Cases, Covers ) Iron manufacturing machine parts ( Spring cases, Pressure shafts, Shaft bearings ) Machine tool parts ( Frames, Beds, Columns, Shaft bearings ) Wire Bonder parts ( Base, Small parts )



Head Office/Plant



## CASTEMA HEAVY INDUSTRIES CO., LTD.

### Newly Overseas Production Base

Following O-Cast Thai Co., Ltd., we established casting factory in Thailand on February 2016. It is possible to constant supply the high quality products to Japan and our investing company “O-Cast” under the support of skilled casting technology of OTA CHUZOSHO Co.,Ltd. We can produce consistently from casting to processing in Thailand just like in Japan by producing together with O-cast Thai Co., Ltd., and we enables customers both at home and abroad to make a broad choice.



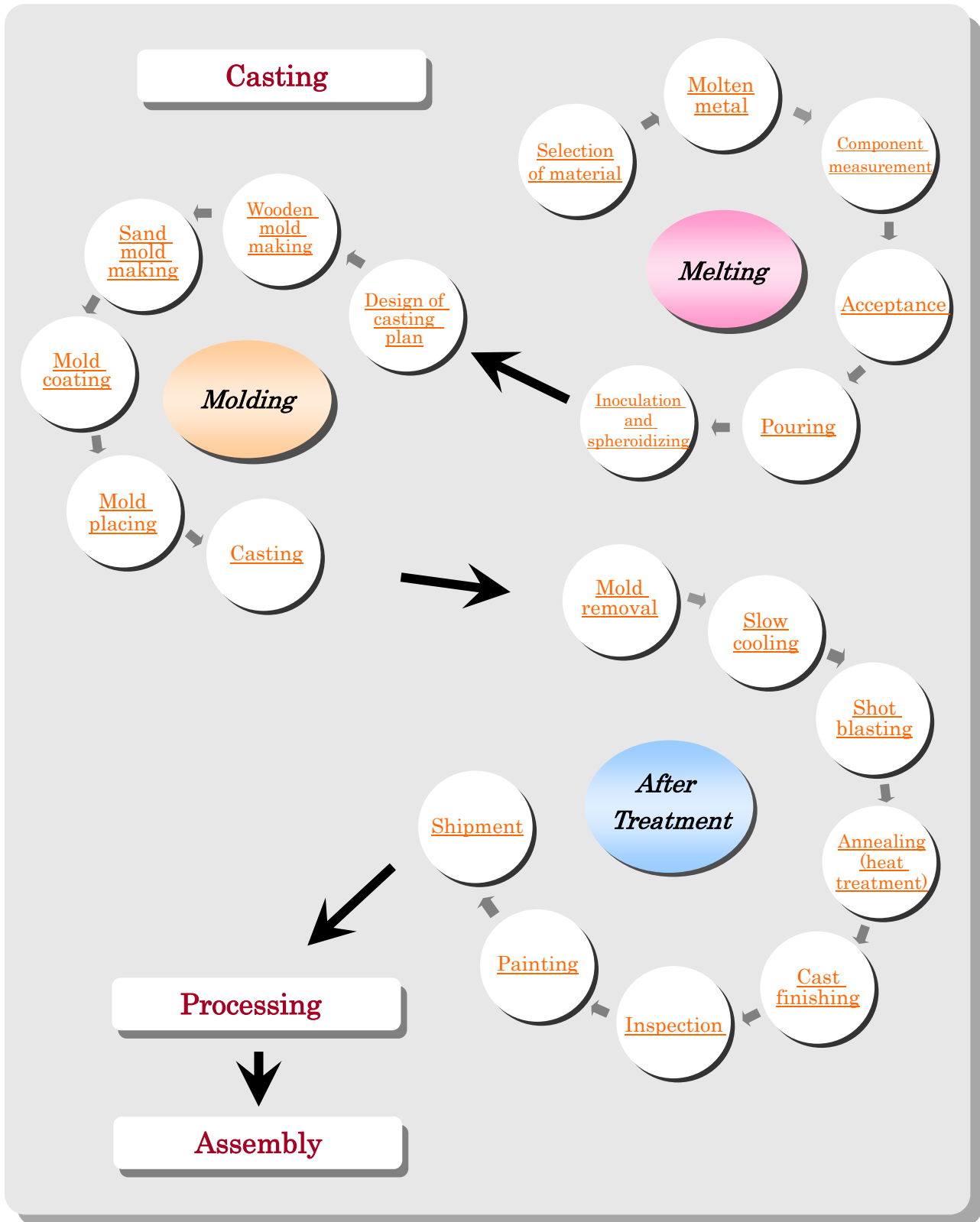
Date of Establishment	January 14, 2013	
Initiation	February 12, 2016	
BOI	July 8, 2013	
Capital	104 million THB	
Representative	Yoshio Ota, Chairman of the Board of Directors	Head Office/Plant
Number of Employees	30	
Head Office/Plant	110/10 Moo.5, T. Makhamku, A. Nikompattana Rayong 21180 Thailand TEL +66-(0)38-949-372~5 FAX +66(0)38-949-376 E-mail castema_ota@yahoo.co.jp	
Description of Business	Casting, Heat treatment, Painting and Assembly	
Quality of Material	FC, FCD, FCH, Ni-Resist	
Available Services	Parts for Printing Machine, Ship, Machine Tool, Injection Molding Machine, Coke Oven, Transport Equipment, Generator and Compression Machine	
Casting Capacity	400 t / Month Max. 5 t Min. 10 kg	
Casting Process	Self-hardening furan resin casting molds	

### ■ Equipment

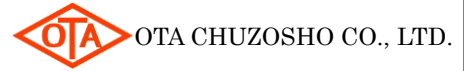
Mixer	(TAIYO MACHINERY)	20t/H	1 unit
Furan sand collecting	(CASTING MACHINE KIYOTA)	15t/H	1 unit
Hanger Shotblasting machine	(SINTOKOGIO)	1,500×1,500×2,500mm	1 unit
2Tons high frequency furnace	(KITASHIBA ELEVTRIC)	1,400kw/H	1power to 2units
CE meter	(NAKAYAMA)	—	1 unit
Forklift	(TCM)	2.5t / 3t	1 unit / 1 unit
Over-head crane	(Mitsubishi Electric)	10t / 5t / 3t	3 / 3 / 7 units
Metal frame (the greatest dimension)	3,000×2,000 / 2,600×1,800 / 2,000×1,500 / 1,800×1,200		

# Casting Process

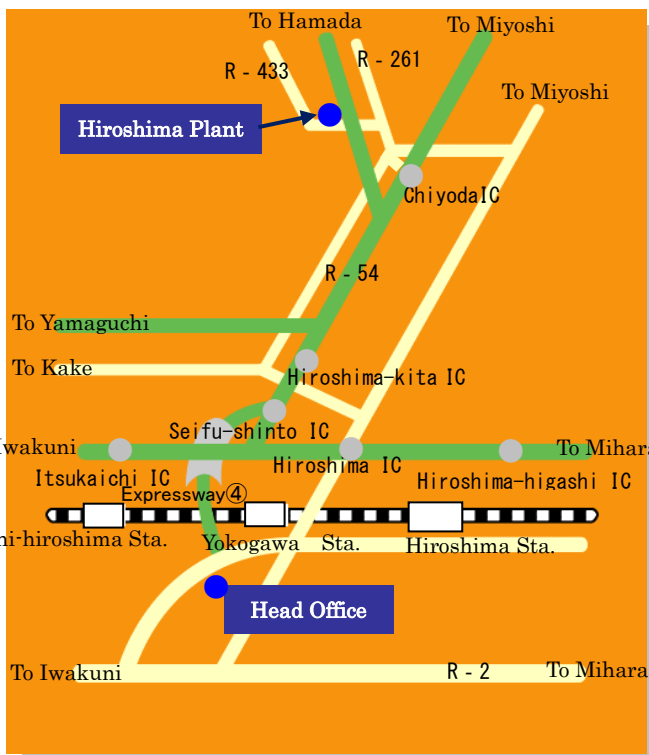
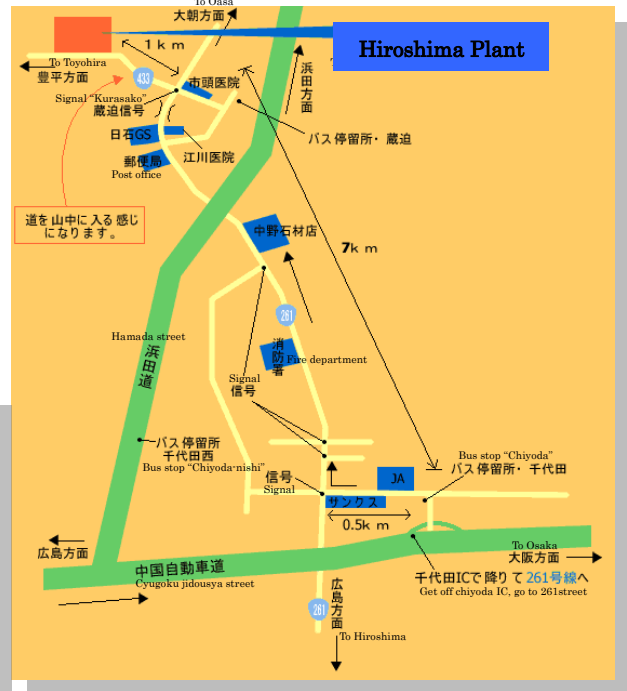
■ By the integrated system for production including machine design, wooden mold manufacturing, casting heat treatment, painting, machining, assembly, inspection and after-sales service, we have achieved high quality, quick delivery and low cost.



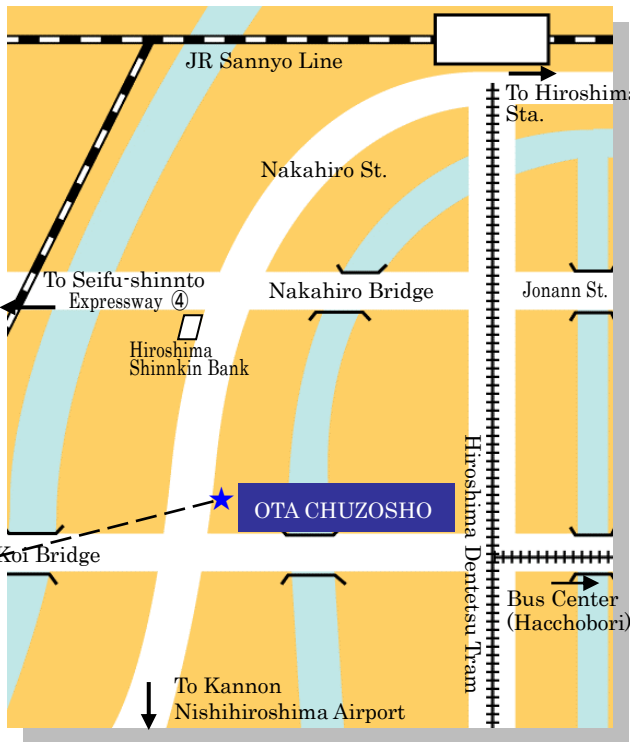
# Map to Hiroshima Plant



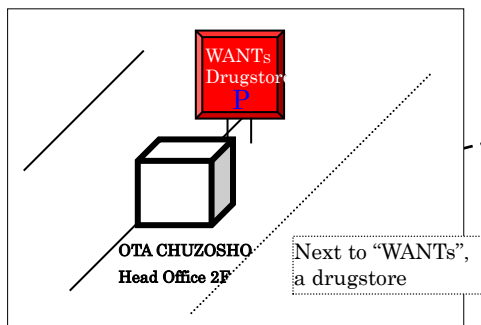
• About 60 minutes' drive by car from Hiroshima Station to Hiroshima Plant



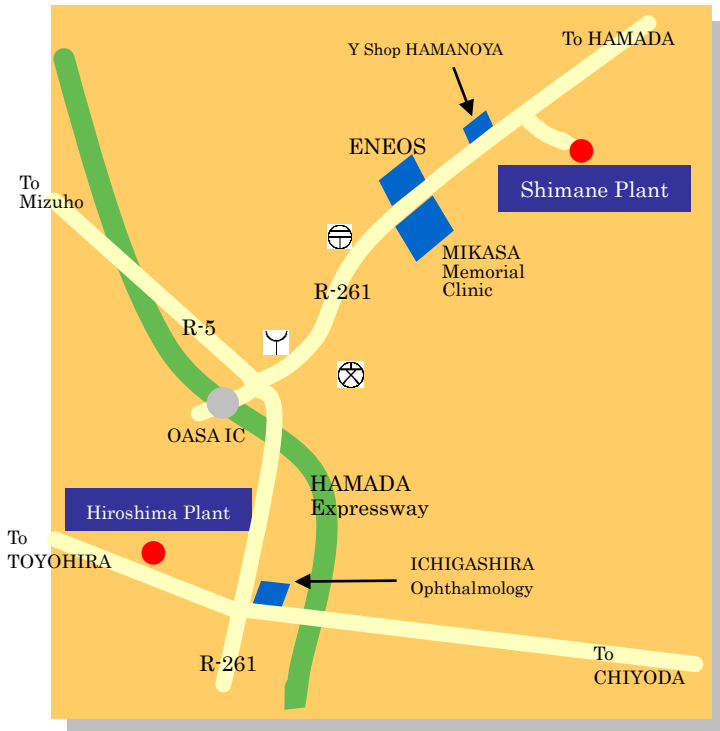
• About 50 minutes' drive by car from Head Office to Hiroshima Plant



- About 15 minutes' drive by car from Hiroshima Station
- About 5 minutes' drive by car from Yokogawa Station
- About 8 minutes' drive by car from Nishihiroshima Station
- About 15 minutes' walk from Tokaichi Tram Stop
- About 3 minutes's walk from Kamitenma-cho Bus Stop

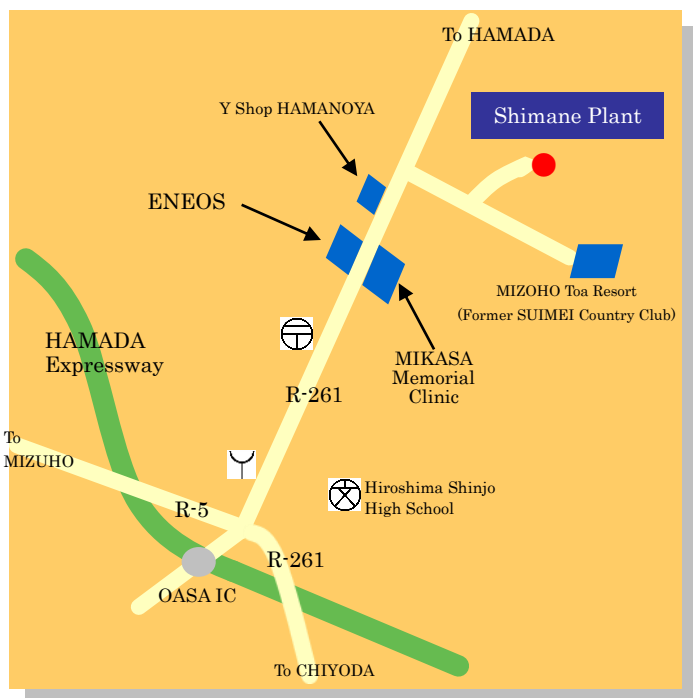


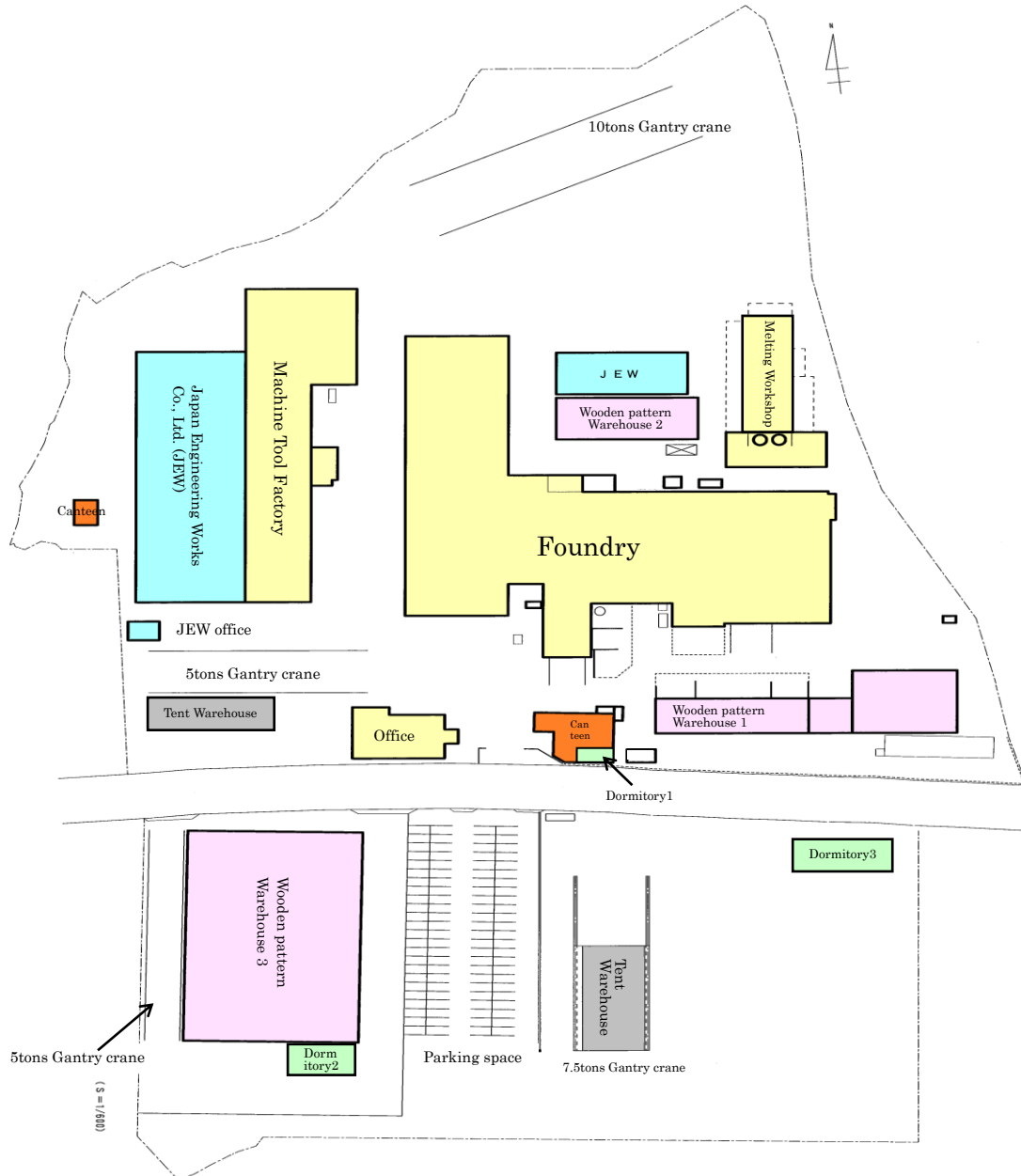
# Map to Shimane Plant



• About 25 minutes' drive by car from Hiroshima Plant

• About 60 minutes' drive by car From Hiroshima Station  
 • About 10 minutes' drive by car from OASA IC





# Ota Casting Group

[www.ohtachuzousyo.co.jp](http://www.ohtachuzousyo.co.jp)



OTA CHUZOSHO CO., LTD.



Japan Engineering Works Co., Ltd.



O-Cast Thai Co., Ltd.



CASTEMA HEAVY INDUSTRIES CO., LTD.