

SHIMAMURA INDUSTRY Co., LTD.

COMPANY PROFILE

<http://www.shimamura-industry.com>

GREETING

Thank you very much for reading our company profile.

90 years have already passed since our company started the production of the casting.

As a member of the supporters of Japanese industry, we follow basics of the manufacturing faithfully.

And we store technology. We have supported development of Japanese industry.

Our products Injection Molding, Die Casting Machine Castings, Pneumatic and Hydraulic Machine Castings and Thermal and Geothermal Power Generation Castings have been used application of industry and social infrastructure variously. Especially it has been abundantly manufactured that product is thick Ductile Cast iron.

We get many customers’ confidence. Our policy is customers’ priority. We are able to construct flexibly manufacturing line, because we make the most of medium sized and small enterprises.

We manufacture customer needs from 100kg to 15000kg in products. Moreover we strive to concentrate on making safe and healthy manufacture surroundings and training craftsmanship.

Meanwhile we promote manufacturing being used ICT and we keep challenging new technology.

Besides we have established manufacture in China since 2012. And we constructed supply system to meet customer needs. Our company declare that “Cast iron products with heart and soul” .

We will sincerely support growth of worldwide customers by manufacturing using of reliable technology we have refined for a long experience.

Shimamura industry Co., LTD. President **Hiroshi Shimamura**

CORPORATE PROFILE

Company Overview

Company name	Shimamura Industry Co., LTD.		
Establishment	1920		
Capital	25,000,000 yen		
Employee	45		
Main Office	1- 12- 10- 506, Mori, Koto-ku, Tokyo, Japan 135- 0001		
Main Factory	2043- 11 Ota, Sakura- city, Chiba, Japan 285- 0808 TEL: +81-43-486-5500 FAX: +81-43-486-6176		
Forming Model Factory	784- 24 Joh, Sakura- city, Chiba, Japan 285- 0817 TEL: +81-43-312-0839 FAX: +81-43-312-0840		
Beipiao Shimamura Machinery	Dasanjia- villege Dasanjia- township Beipiao- city, Chaoyang Prefecture, Liaoning TEL&FAX: +86-421-5751198		
Business Contents	●Ductile Iron Casting ●Gray Cast Iron ●Special Cast Iron ●Modeling・Machining		
Homepage URL	http://www.shimamura-industry.com		

Main Factory

Contract Demand	2050kw
Factory Site	11000m²
Factory Building Total Area	2955m²
Office / Welfare building	291m²
Casting Factory	2269m²
Core Factory and Pattern Warehouse	368m²
Tent Warehouse	1066m²
Ability For Monthly Production	550t
Single product weight	15t Max.
Molding frame size	4000X3000X2400(mm)

Beipiao Shimamura Machinery

Factory Building Total Area	5760m²
Main Building	3840m²
Multi-purpose Warehouse	1920m²
Ability For Monthly Production	400t
Single product weight	1800kg

Forming Model Factory

Factory Site	141m²
Office / Welfare building	34m²



History

1920	Tokutaro Shimamura founded a foundry in Fukagawa, Tokyo. Manufacturing pig iron castings for a lot of machines.
1923	Foundry destructed by fire caused by the Great Earthquake in Kanto area.
February, 1924	Restart business.
October, 1927	Moved to Oshima-cho, Koto-ku, Tokyo, for plottage reduction by land readjustment.
1934	Joint stock company, Shimamura foundry is established as a juridical person organization.
March, 1945	Most part of the foundry was lost by the war. Immediately started restoration which enabled some work to start in July.
1949	Reorganization of the Corporation, established Shimamura-industry headquartered in Tokyo, inducting Kunitaro Shimamura as the managing director.
1954	Saburo Shimamura took the office as a representative director.
1965	Start production of Ductile casting iron.
1968	Transferred the main office to Oshima, Koto-ku, Tokyo.
1973	Cupola furnace of 3t and 5t was abolished, and 5t low frequency induction furnace was installed.
1978	Molding process was switched from inorganic self-hardening to organic self-hardening.
1981	Transferred the factory to the current area for exclusive use of the industry, considering the future development.
January, 1988	Saburo Shimamura assumed the chairperson, and Ikutaro Shimamura assumed the representative director of office.
May, 1988	Enlarged 2t high frequency induction furnace.
May, 1992	Shift mold coat type to aqueous coating. Introduced mold dry kiln.
May, 1993	Materials examination room and chemical analysis room was established.
October, 1997	30t mixer, 15t vibration table and 15t crane were set for factory enlargement.
December, 2003	20t crane setting
September, 2005	5t low frequency induction furnace and 2t high frequency induction furnace were abolished, and 3t high frequency induction furnace was installed.
July, 2010	Hiroshi Shimamura, the former executive director, took the office as a representative director.
October, 2012	Beipiao Shimamura Machinery Co., Ltd. was founded in Beipiao, Chaoyang, Liaoning, China, solely owned by Shimamura Industry Co., Ltd.
February 2015	Forming Model Factory was started operation.

Main Client

VOITH IHI Paper Technology Co., Ltd.
Aida Engineering, Ltd.
Akita Zinc Solution Co., Ltd.
Akiyama International, Inc.
IHI Machinery and Furnace Co., Ltd.
IHI Corporation
IHI Compressor and Machinery Co., Ltd.
Ozaki Gear Works Co., Ltd.
Kohtaki Precision Machine Co., Ltd.
Sanwakizai Co., Ltd.
Sumitomo Heavy Industry Modern, Ltd.
Sumitomo Heavy Industry, Ltd.
SEISA Gear, Ltd.
DMW Corporation
Toshiba Machine Co., Ltd.
Toshiba Engineering Co., Ltd.
Towa Industrial Machine Co., Ltd.
Ican Company Ltd.
Otis Elevator Company
Nippon Fischer Co., Ltd.
Hitachi Industrial Equipment Systems Co., Ltd.
Fuji Electric Co., Ltd.
Others



Main equipment of Main Factory

Melting	High frequency induction furnace	2(3t)
	Ladle	6(8,5,4,3t)
Molding	Long arm mixer	3(30t/h,20t/h,5t/h)
	Batch mixer	1(30kg/batch)
	Molding vibration table	2(15t,5t)
	Rotary sling	2(2t×2×2)
	Washing Drying oven	2(Hot wind circulation-type)
	Mixing machine for mold washing	2
	Shake-out machine	1(10t)
	Sand crusher	1(20t/h)
	Sand shiner	2(10t/h)
	Sand cooler	2(10t/h)
	Air transportation	2(10t/h)
Finishing	Monorail type shot-blast	1(10t)
	Drum type shot-blast	1
	High frequency generator	4
	Swing grinder	1
	Welder	3
Handling	Top running overhead crane	1(20t) 2(15t) 1(10t) 1(7.5t) 2(5t) 1(2.8t)(lifting magnet) 3(1t)
	Semi gantry crane	2(5t) 2(2.8t)
	Gantry crane	2(2.8t)
Examination inspection	Immersing pyrometer	3
	Ultrasonic Flaw Detector	2
	Magnetic Flaw Detector (York type)	2
	Optical emission spectrometer	1(16elements)
	C/E meter	1
	Amsler universal testing machine	1
	Brinell hardness testing machine	1
	Shore hardness testing machine	2
	Hand H B hardness testing tool	1
	Metallurgical microscope	1
	Metallurgical microscope (portable type)	1
	Ultrasonic Thickness Gauge	2
	Thickness meter	1

Main equipment of Beipiao Shimamura Machinery

Melting	High frequency induction furnace	2(2t)
	Ladle	5(2,1,0.5t)
Molding	Long arm mixer	2(20t/h,5t/h)
	Molding vibration table	1(5t)
	Washing Drying oven	1(Hot wind circulation-type)
	Shake-out machine	1(10t)
	Sand crusher	1(10t/h)
	Sand shiner	1(10t/h)
	Sand cooler	1(10t/h)
	Air transportation	1(10t/h)
Finishing	Monorail type shot-blast	2(5t)
	Welder	2
Examination inspection	Immersing pyrometer	2
	Ultrasonic Flaw Detector	1
	Optical emission spectrometer	1(26elements)
	C/E meter	1
	Amsler universal testing machine	1
	Brinell hardness testing machine	1
	Hand H B hardness testing tool	1
	Metallurgical microscope (portable type)	1
Machining	Thickness meter	1
	Vertical Boring and Turning Mill	1(Toshiba Machining/TXN-13)

Main equipment of Forming Model Factory

Machining	Machining center MC83-1	1
	Band sawing machine	2
	Circular sawing machine	1
	Auto feed planers	1
	Jointer planers	1
	Drilling machine	1
Design system	CAD, CAM (Solid Works, Master Cam)	1
Other	Compressor	1(20HP)

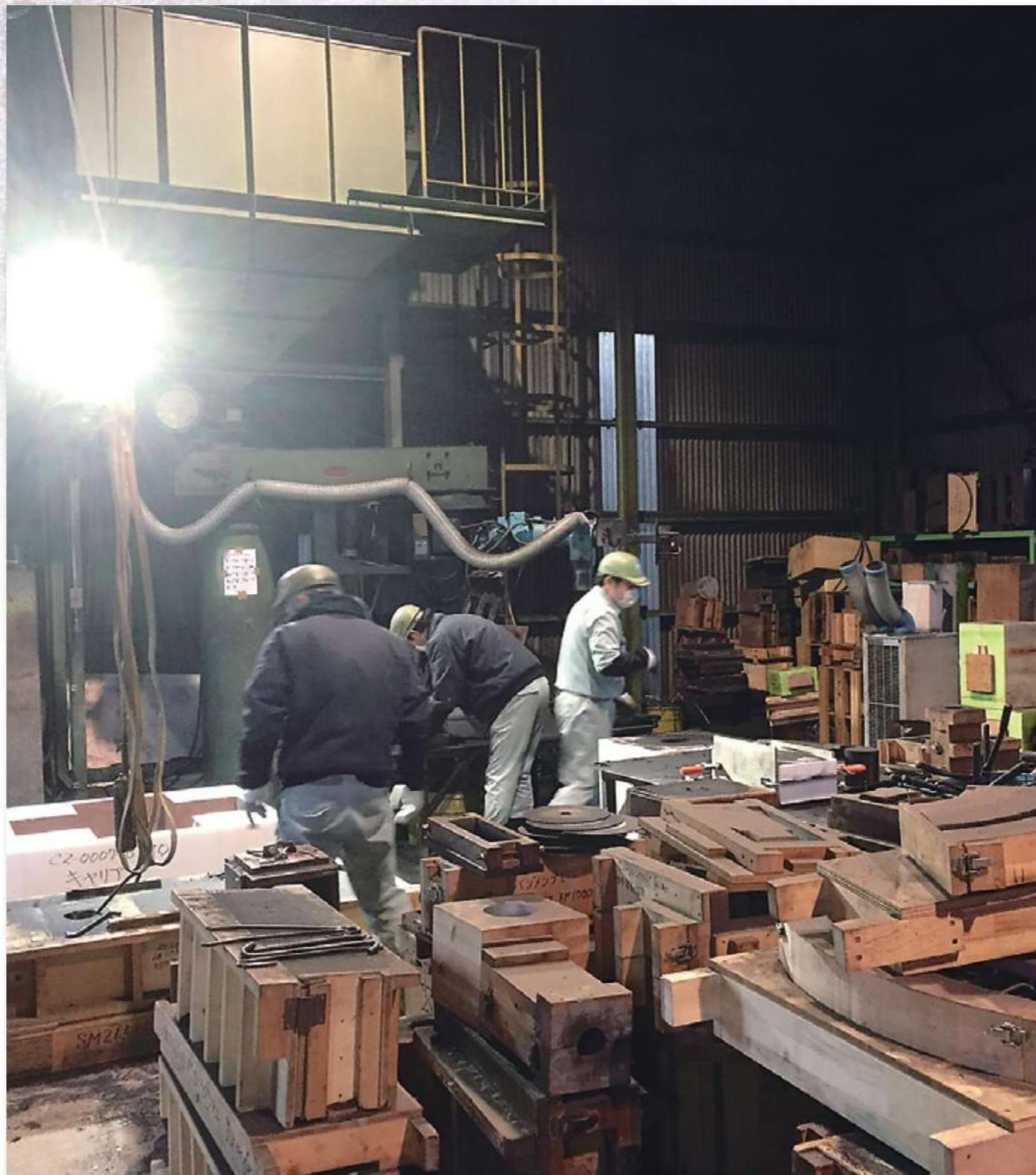
Main Factory



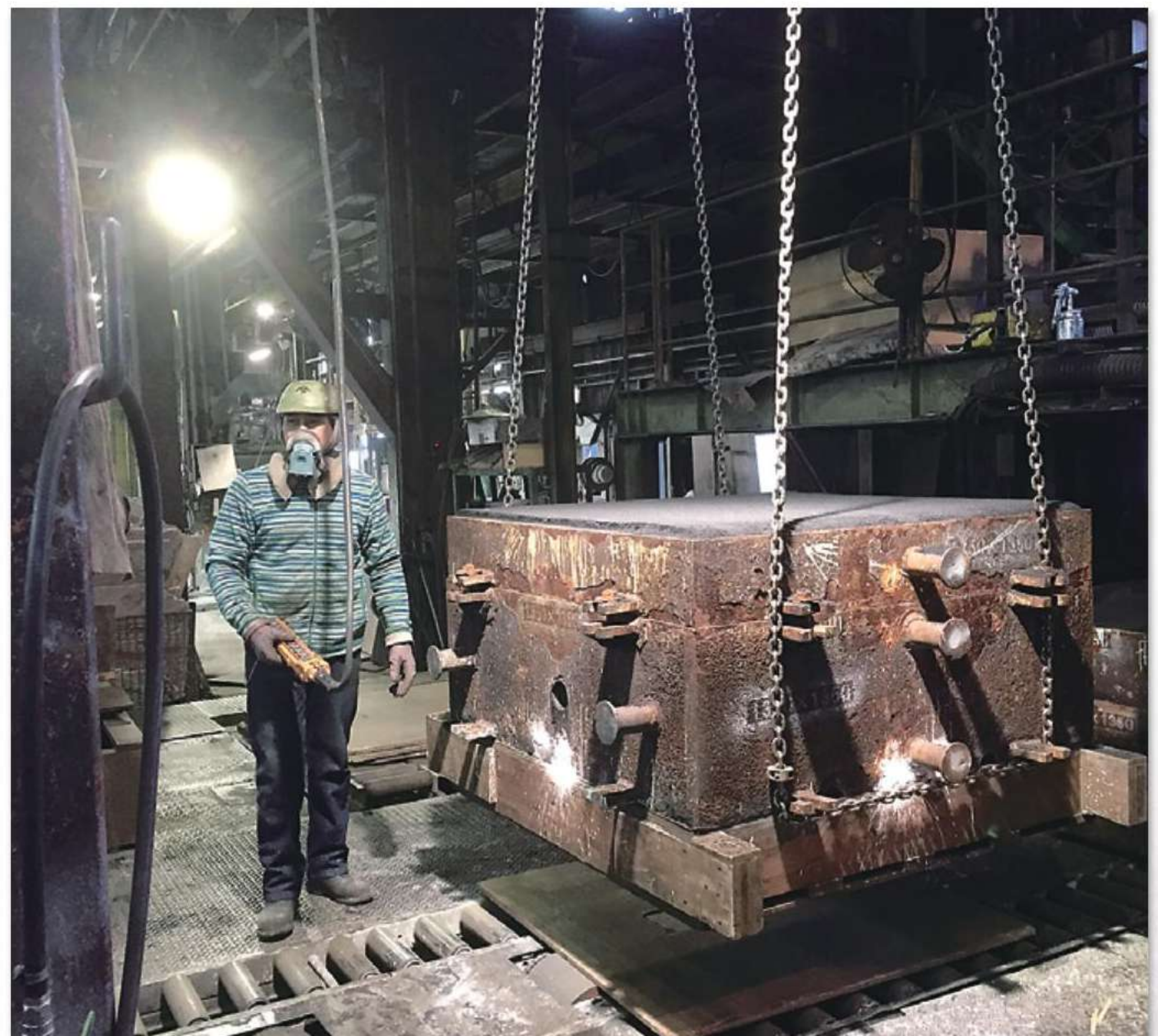
Main Factory



Molding



Core Molding



Roll Over Draw



Mold Assembly



Mold Closing

Main Factory



Slag-off



Pouring



Finishing



Examination

Beipiao Shimamura Machinery



High Frequency Induction Furnace



Examination



Molding

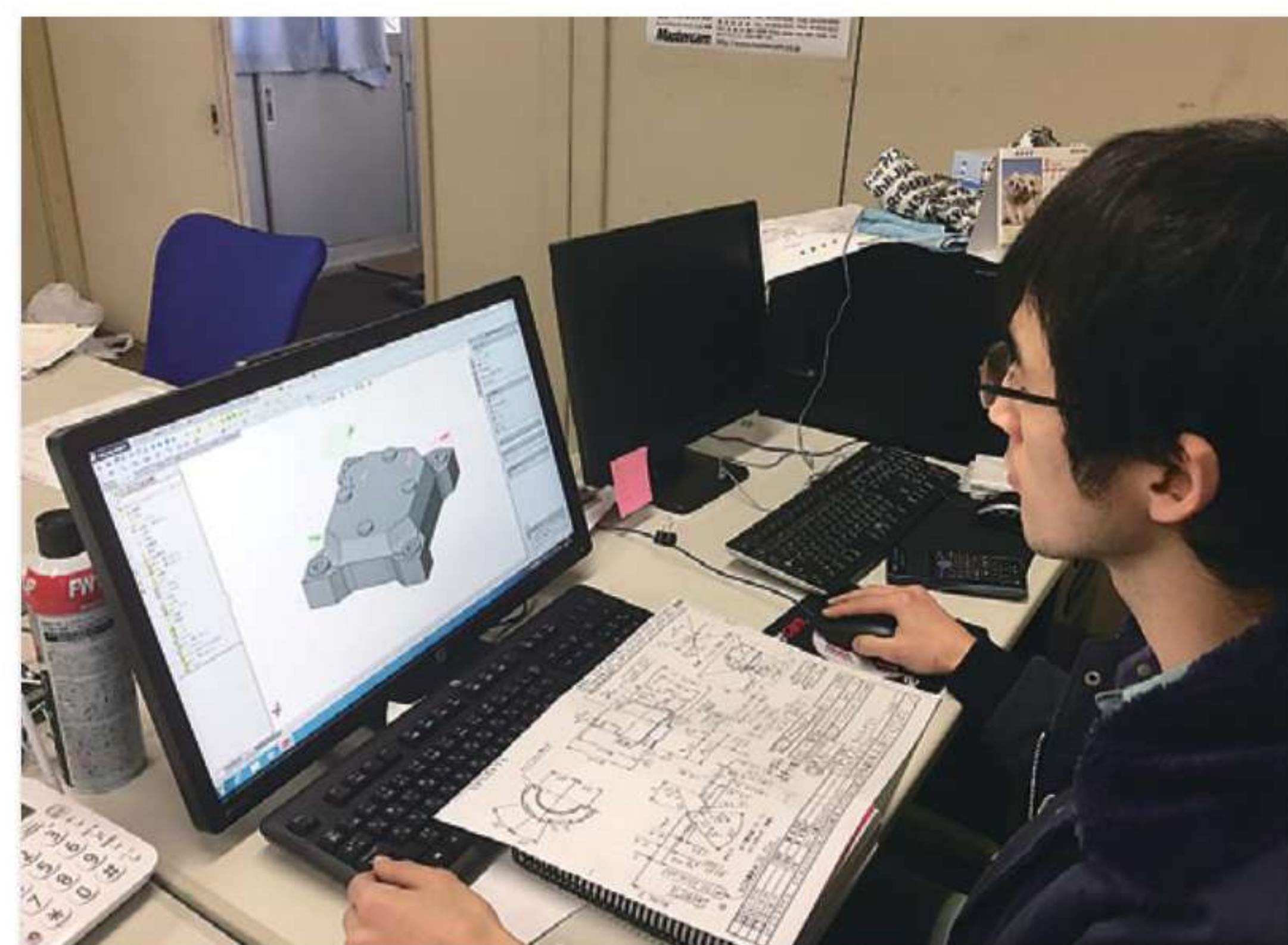


Turning Mill

Forming Model Factory



Band Sawing



CAD

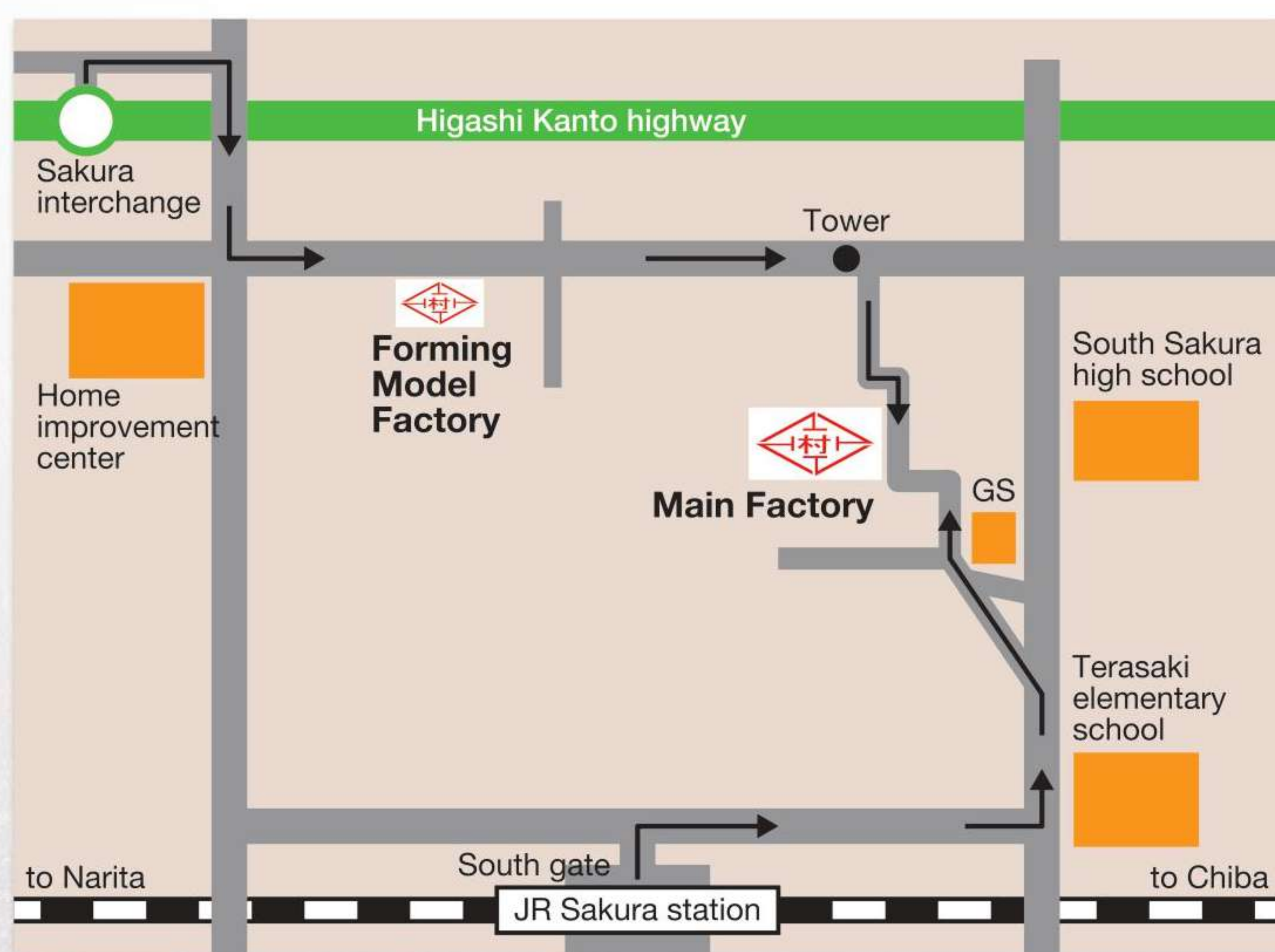


Machining Center

ACCESS



SHIMAMURA INDUSTRY Co., LTD.



Main Factory

2043- 11 Ota, Sakura- city, Chiba, Japan 285- 0808

TEL: +81-43-486-5500

FAX: +81-43-486-6176

By car

5 minutes from Higashi Kanto highway Sakura interchange

By train

From JR Sakura Station, 25 minutes on foot or 5 minutes by taxi

Forming Model Factory

784- 24 Joh, Sakura- city, Chiba, Japan 285- 0817

TEL: +81-43-312-0840

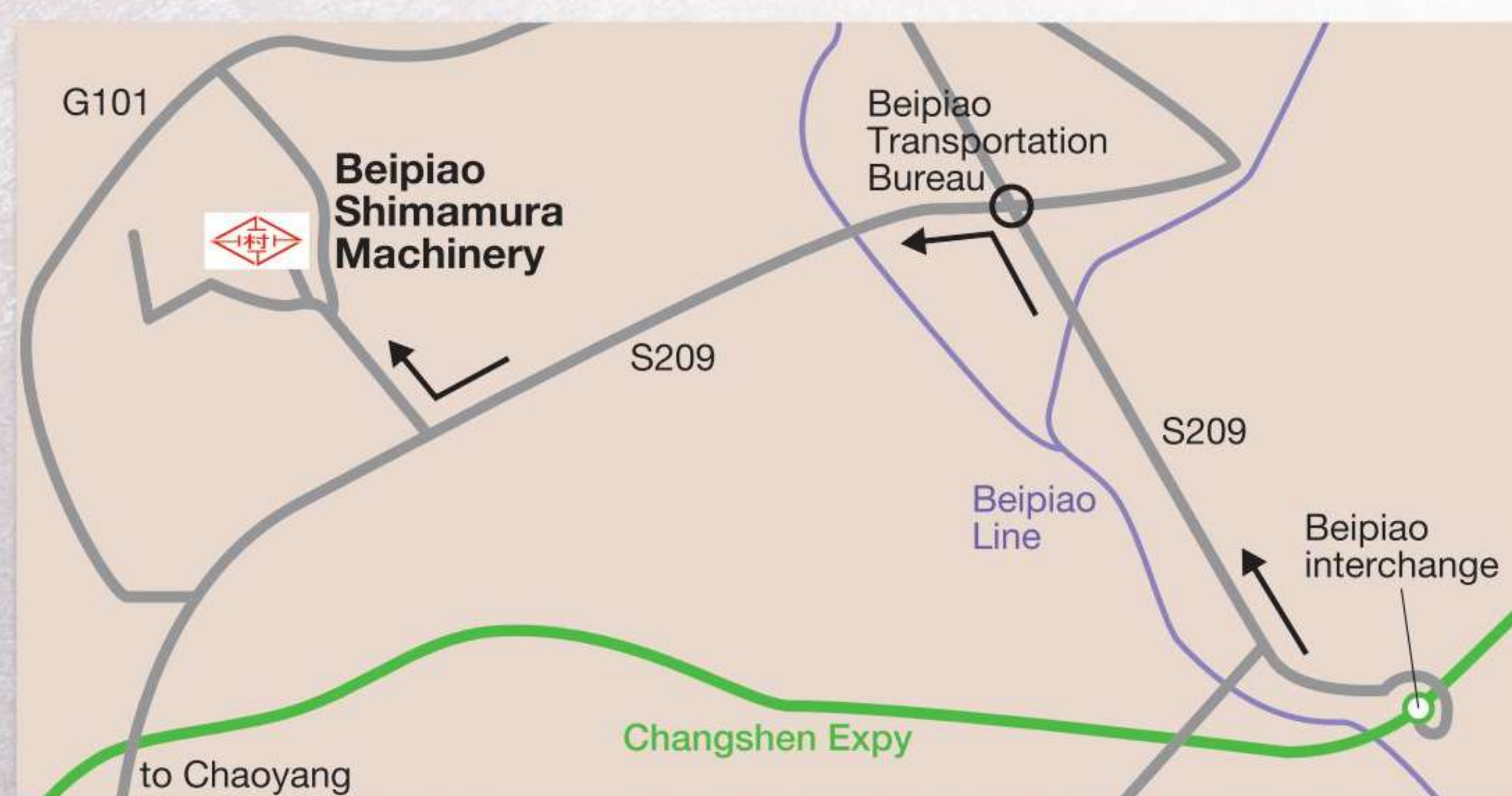
FAX: +81-43-312-0839

By car

5 minutes from Higashi Kanto highway Sakura interchange

By train

From JR Sakura station, 8 minutes by taxi



Beipiao Shimamura Machinery

Dasanjia- villege Dasanjia- township Beipiao- city,

Chaoyang Prefecture, Liaoning

TEL&FAX: +86-421-5751198

By car

30 minutes from Beipiao interchange

By airplane

From Chaoyang-Airport, 40 minutes by taxi